

Hampshire Water Transfer and Water Recycling Project

Environmental Statement - Appendix 19.2 Figure 9 Pipeline between the Water Recycling Plant site and Otterbourne Water Supply Works against Protected Areas within a 2km buffer

VOLUME NUMBER: 6

PLANNING INSPECTORATE SCHEME NUMBER: WA010002

APPLICATION DOCUMENT REFERENCE: 6.3

APFP REGULATION: 5(2)(a)

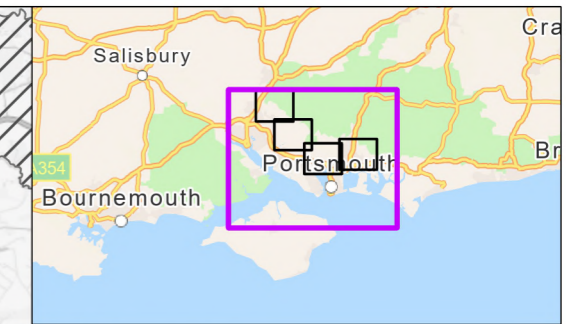
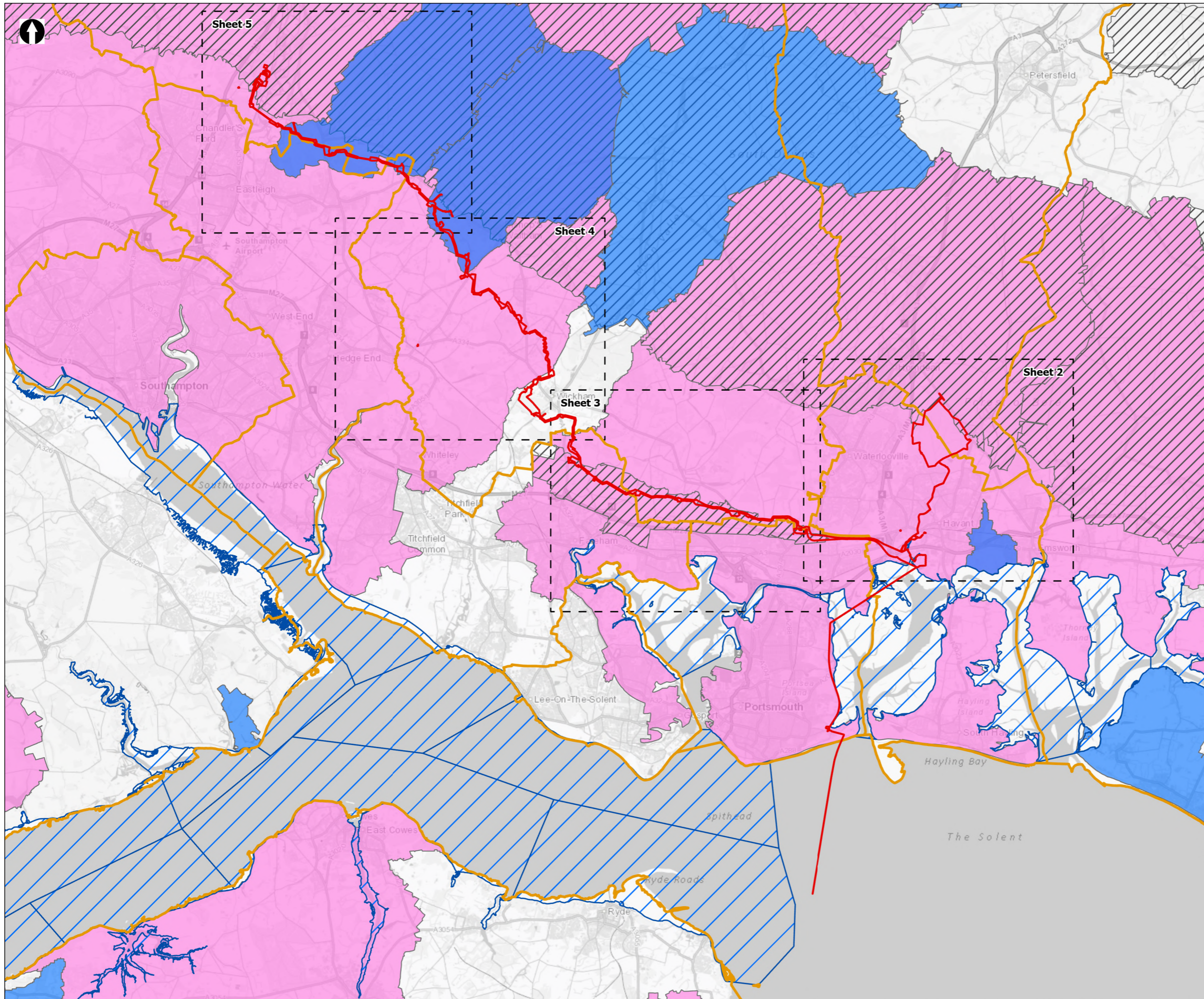
May 2026

Version 0



from
**Southern
Water** 

The Southern Water logo consists of the words 'Southern' and 'Water' stacked vertically in a blue, sans-serif font. To the right of the word 'Water' is a graphic element consisting of three stylized, wavy blue lines of varying lengths, representing water waves.



- Order Limits
- Sheet Extent Boxes 1:30K
- Local planning authorities
- Shellfish Water Protected Areas
- Nitrate Vulnerable Zones**
- Eutrophic Water
- Groundwater
- Surface Water

Coordinate system: British National Grid; Datum: OSGB 1936
 Data sources: © Crown copyright and database rights 2026 Ordnance Survey 0100031673. © Environment Agency, Contains OS data © Crown Copyright and database right 2020, Sources: Esri, TomTom, Garmin, FAO, NOAA, USGS, © OpenStreetMap contributors, and the GIS User Community

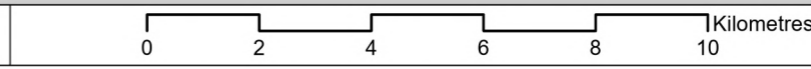
PROJECT TITLE
 Hampshire Water Transfer and Water Recycling Project



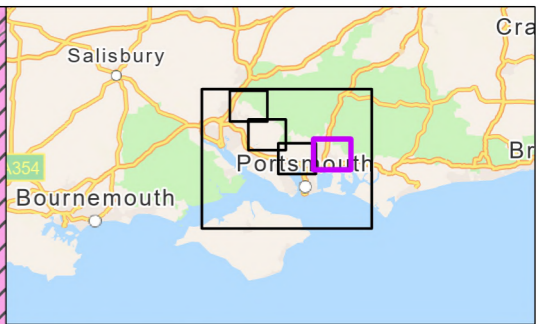
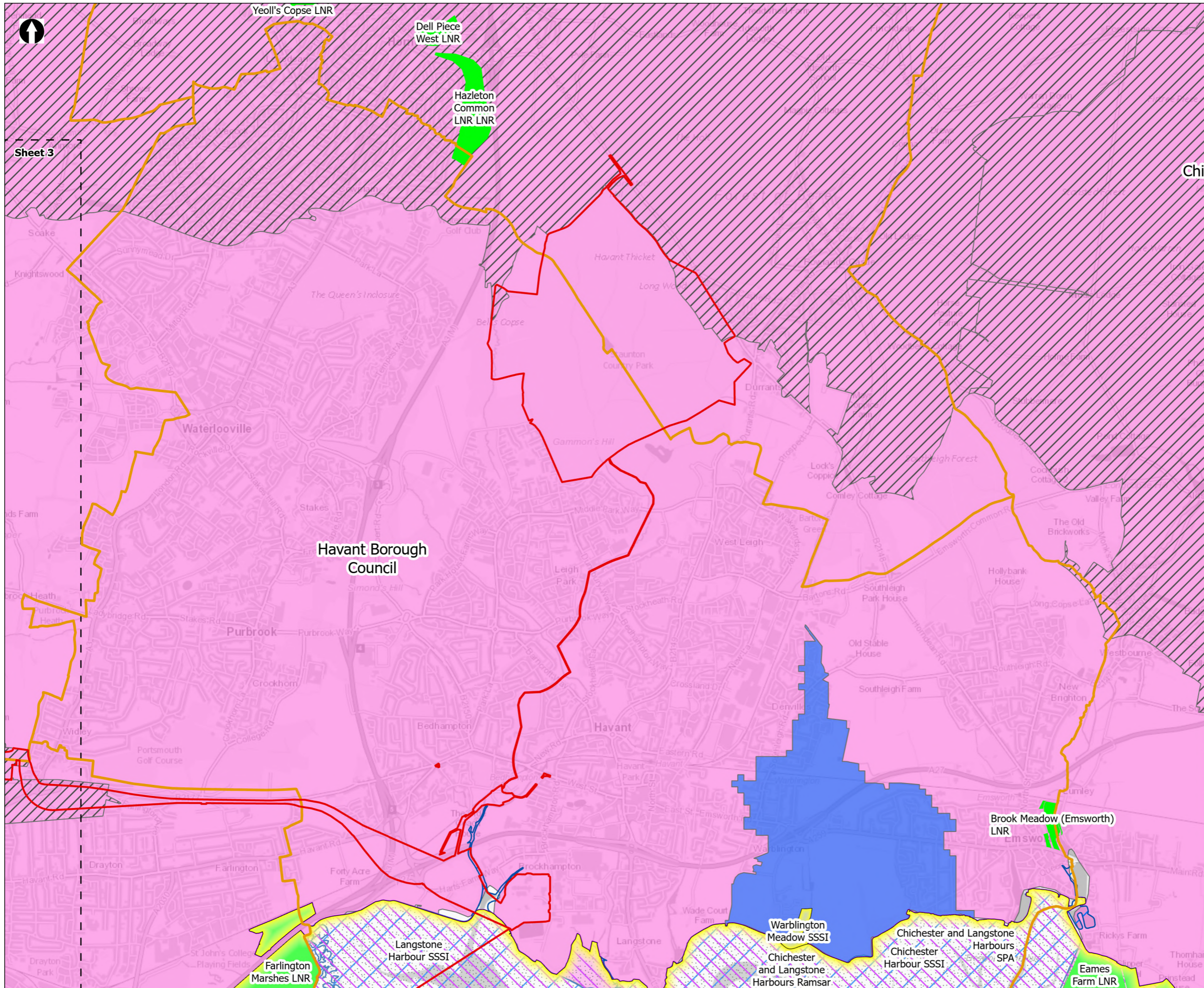
Appendix 19.2. Figure 9
 Pipeline between the Water Recycling Plant site and Otterbourne Water Supply Works against protected areas within a 2km buffer

Drawn DL	GIS Checked MW	Checked MP	Approved AK
Scale at A3 1:135,000	Status Final	Revision 05	Security STD

© Southern Water 2026
 This document is issued for the party which commissioned it and for specific purposes connected with the captioned project only. It should not be relied upon by any other party or used for any other purpose. We accept no responsibility for the consequences of this document being relied upon by any other party, or being used for any other purpose, or containing any error or omission which is due to an error or omission in data supplied to us by other parties.



Drawing Number
PC5223-RHD-ES-ZZ-D-Z-0104



Sheet 3

- Order Limits
- Sheet Extent Boxes 1:30K
- Local planning authorities
- Shellfish Water Protected Areas
- Nitrate Vulnerable Zones**
- Eutrophic Water
- Groundwater
- Surface Water
- Designated Sites**
- Sites of Special Scientific Interest (SSSI)
- Local Nature Reserves
- Ramsar
- Special Protection Areas (SPA)

Coordinate system: British National Grid; Datum: OSGB 1936
 Data sources: © Crown copyright and database rights 2026 Ordnance Survey 0100031673. © Environment Agency, Contains OS data © Crown Copyright and database right 2020, Sources: Esri, TomTom, Garmin, FAO, NOAA, USGS, © OpenStreetMap contributors, and the GIS User Community

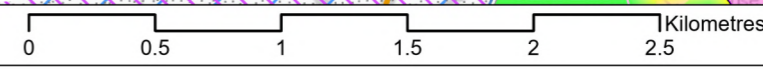
PROJECT TITLE
 Hampshire Water Transfer and Water Recycling Project



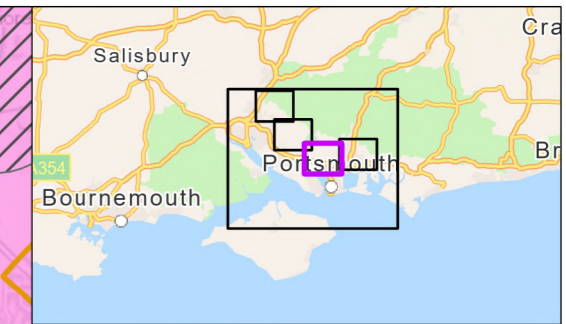
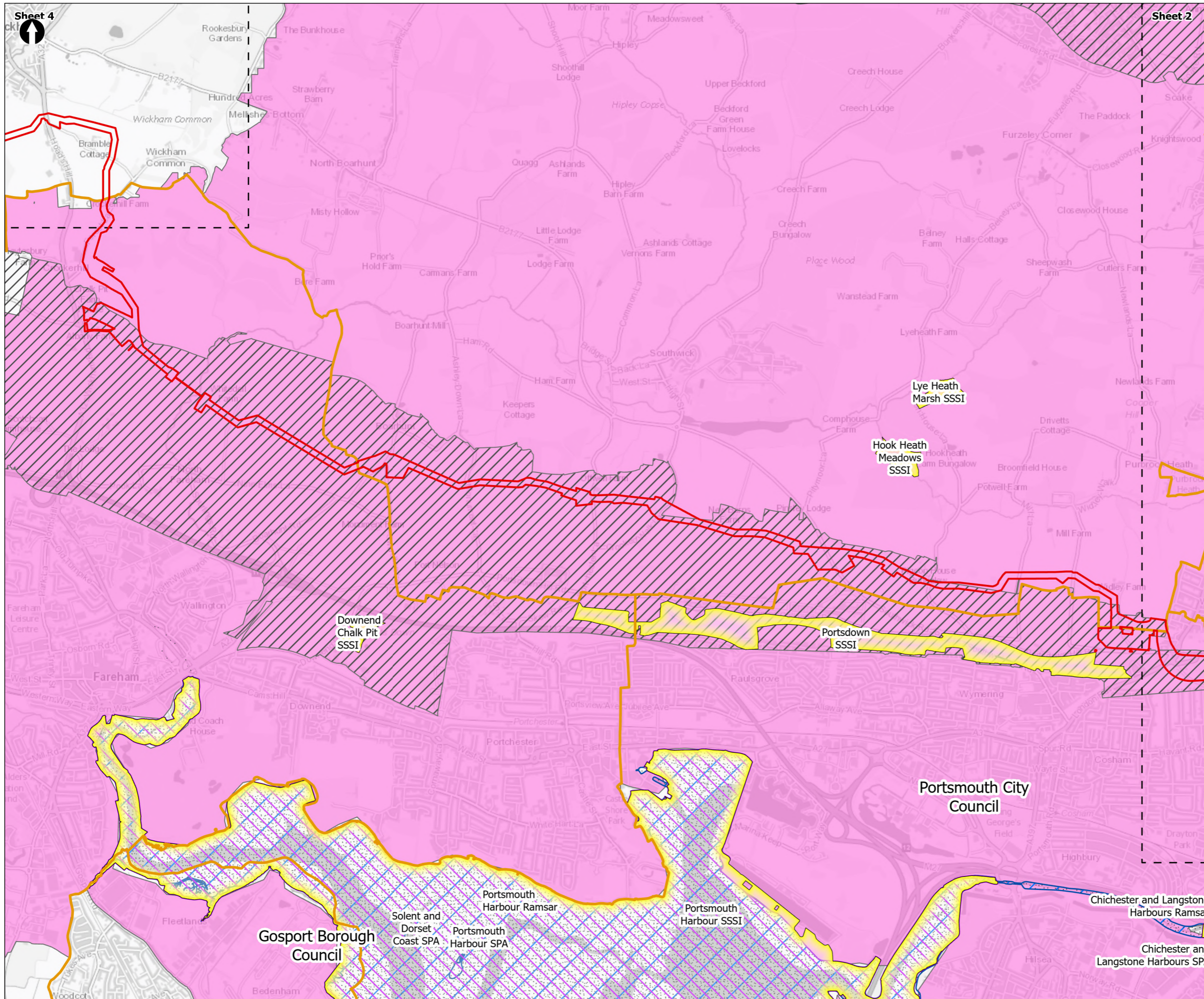
Appendix 19.2. Figure 9
 Pipeline between the Water Recycling Plant site and Otterbourne Water Supply Works against protected areas within a 2km buffer

Drawn DL	GIS Checked MW	Checked MP	Approved AK
Scale at A3 1:30,000	Status Final	Revision 05	Security STD

© Southern Water 2026
 This document is issued for the party which commissioned it and for specific purposes connected with the captioned project only. It should not be relied upon by any other party or used for any other purpose. We accept no responsibility for the consequences of this document being relied upon by any other party, or being used for any other purpose, or containing any error or omission which is due to an error or omission in data supplied to us by other parties.



Drawing Number
 PC5223-RHD-ES-ZZ-D-Z-0104



Order Limits

Sheet Extent Boxes 1:30K

Local planning authorities

Shellfish Water Protected Areas

Nitrate Vulnerable Zones

- Eutrophic Water
- Groundwater

Designated Sites

- Sites of Special Scientific Interest (SSSI)
- Ramsar
- Special Protection Areas (SPA)

Coordinate system: British National Grid; Datum: OSGB 1936
 Data sources: © Crown copyright and database rights 2026 Ordnance Survey 0100031673. © Environment Agency, Contains OS data © Crown Copyright and database right 2020, Sources: Esri, TomTom, Garmin, FAO, NOAA, USGS, © OpenStreetMap contributors, and the GIS User Community

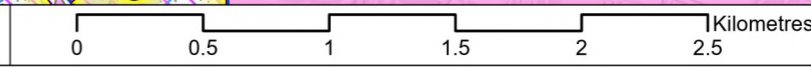
PROJECT TITLE
 Hampshire Water Transfer and Water Recycling Project

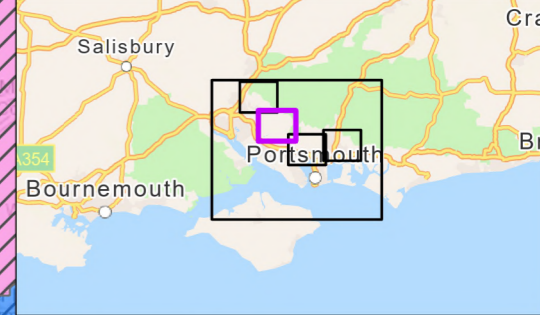
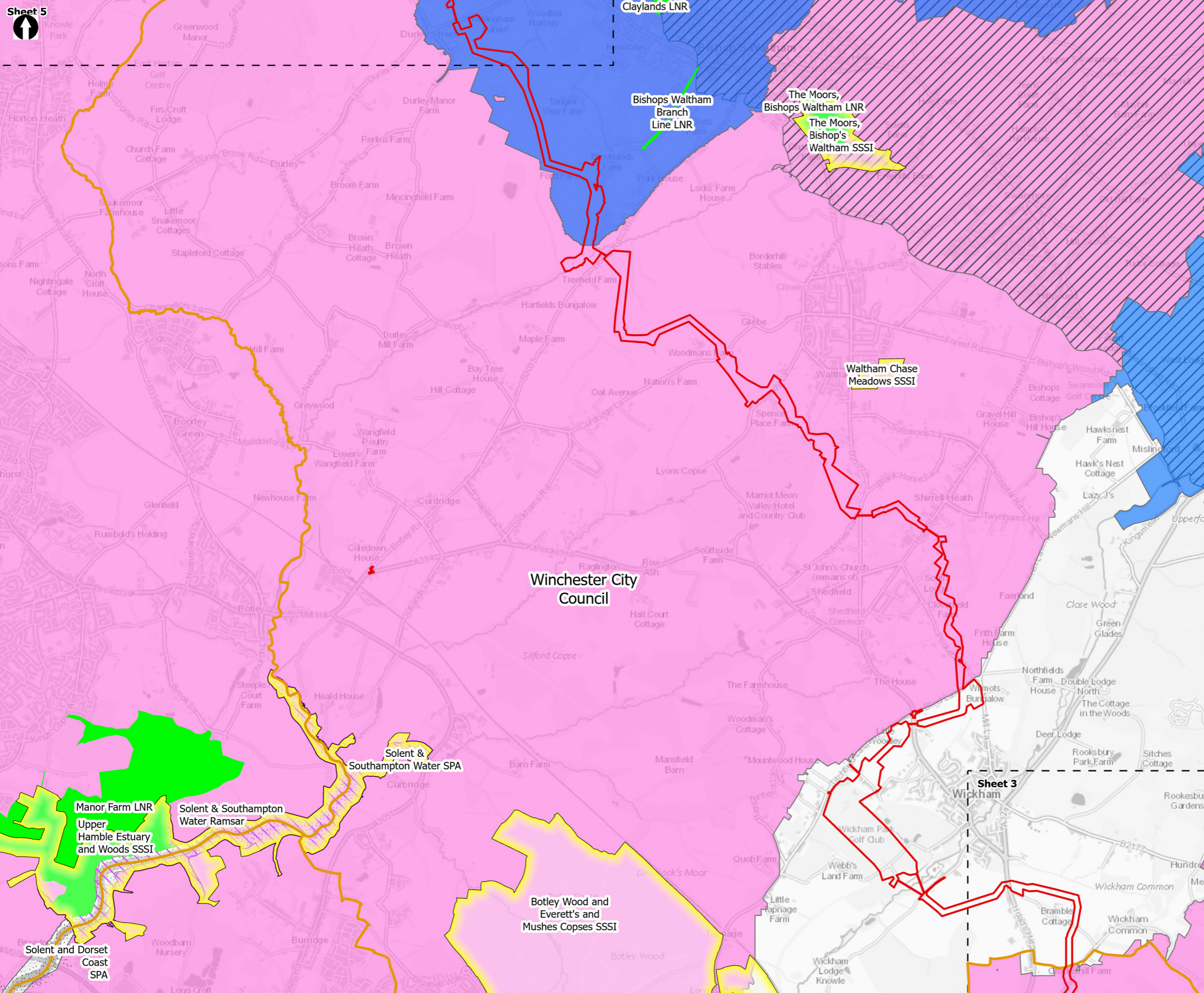


Appendix 19.2. Figure 9
 Pipeline between the Water Recycling Plant site and Otterbourne Water Supply Works against protected areas within a 2km buffer

Drawn DL	GIS Checked MW	Checked MP	Approved AK
Scale at A3 1:30,000	Status Final	Revision 05	Security STD

Drawing Number **PC5223-RHD-ES-ZZ-D-Z-0104**





- Order Limits
- Sheet Extent Boxes 1:30K
- Local planning authorities
- Nitrate Vulnerable Zones**
- Eutrophic Water
- Groundwater
- Surface Water
- Designated Sites**
- Sites of Special Scientific Interest (SSSI)
- Local Nature Reserves
- Ramsar
- Special Protection Areas (SPA)

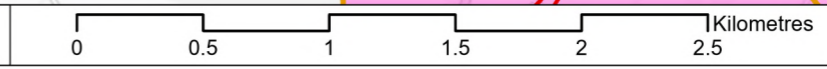
Coordinate system: British National Grid; Datum: OSGB 1936
 Data sources: © Crown copyright and database rights 2026 Ordnance Survey 0100031673. © Environment Agency, Contains OS data © Crown Copyright and database right 2020. Sources: Esri, TomTom, Garmin, FAO, NOAA, USGS, © OpenStreetMap contributors, and the GIS User Community

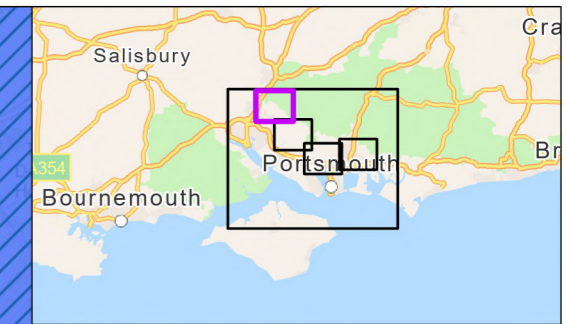
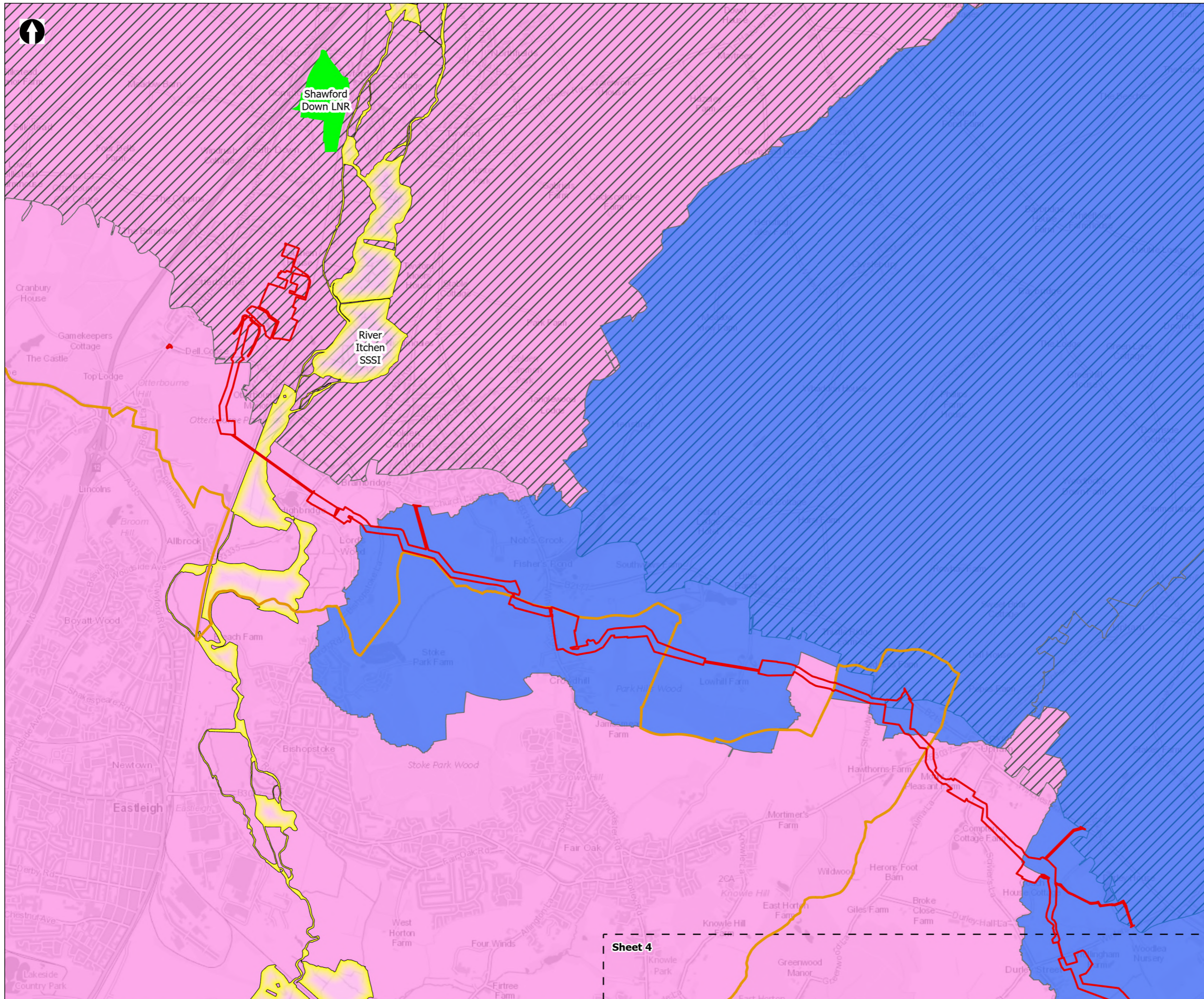
PROJECT TITLE
 Hampshire Water Transfer and Water Recycling Project



Appendix 19.2. Figure 9
 Pipeline between the Water Recycling Plant site and Otterbourne Water Supply Works against protected areas within a 2km buffer

Drawn DL	GIS Checked MW	Checked MP	Approved AK
Scale at A3 1:30,000	Status Final	Revision 05	Security STD





Order Limits
 Sheet Extent Boxes 1:30K
 Local planning authorities

Nitrate Vulnerable Zones
 Eutrophic Water
 Groundwater
 Surface Water

Designated Sites
 Sites of Special Scientific Interest (SSSI)
 Local Nature Reserves

Coordinate system: British National Grid; Datum: OSGB 1936
 Data sources: © Crown copyright and database rights 2026 Ordnance Survey 0100031673. © Environment Agency, Contains OS data © Crown Copyright and database right 2020, Sources: Esri, TomTom, Garmin, FAO, NOAA, USGS, © OpenStreetMap contributors, and the GIS User Community

PROJECT TITLE
 Hampshire Water Transfer and Water Recycling Project



Appendix 19.2. Figure 9
 Pipeline between the Water Recycling Plant site and Otterbourne Water Supply Works against protected areas within a 2km buffer

Drawn DL	GIS Checked MW	Checked MP	Approved AK
Scale at A3 1:30,000	Status Final	Revision 05	Security STD

